

Installation Instructions: Fiberon® Hidden Fasteners

The Fiberon hidden fastener is a deck fastening system designed specifically for grooved (GV) deck boards. The Fiberon hidden fastener is a fast and simple way to install any deck and create a smooth deck surface, uninterrupted by visible screws or nails.

CAUTION: Contains parts with sharp edges. Use proper care. Use of gloves is recommended.

Initial installation of deck boards

1. Refer to figure 1 typical joist spacing is 16" o.c.. Commercial or diagonal installations typically require 12" o.c.. 1/4" spacing from any permanent structure (example wall or post) is required. Side to side gapping of 3/16" required. End to end gapping of 1/8" is required. Ventilation of 6" (net free area is required). Fiberon hidden fasteners are NOT to be used on stair treads (Stair treads require the use of face fasteners/screws).
2. Position the first deck board on the support joists. Leave a 1/4" gap from any permanent structure (fig. 2).
2. Pre-drill the first deck board with a 1/8" drill along the outside edge of the board at every support joist. To prevent cracking of the board the holes at the end of the board should be a minimum of 1-1/2" from the end. The holes along the grooved edge of the board should be a minimum of 1" from the edge.
3. Secure the first deck board by fastening with a stainless steel deck screw in each pre-drilled hole. **DO NOT OVER-TIGHTEN THE SCREWS.**
4. Insert a Fiberon hidden fastener into the side groove of the board at every support joist (single tab first). The In Line fastener (single tab) should engage the deck board by a minimum of 5/16" (fig. 3). Center the screw hole on the joist. To secure the ends of two boards use the Butt Joint fasteners as shown below. (fig. 2)
5. Install a screw (provided with the fasteners) through the hole in the Fiberon hidden fastener into the center of each support joist. Angle the fastener toward the first deck board (fig. 3:1). **DO NOT OVER-TIGHTEN THE SCREWS. GUNNABLE INSTALL:** Align the gun by bracketing the Phantom clip with the yellow adaptor. Make sure the magazine is flush with the joist and pressure is applied against the clip to prevent kick-back. Press down to disengage the safety and secure the clip. (Note: if for whatever reason the screw requires removal, slowly back out using a screwdriver. **DO NOT TRY TO REMOVE USING A DRILL OR POWERED DRIVER**)
6. Position the next deck board against the fastener tabs and slide the board onto the tabs. If necessary, slightly lift the outer edge of the board to ease the assembly of the board onto the fastener tabs (fig. 3:1). When installed properly the fastener will ensure a 3/16" gap (fig. 3:3).
7. Repeat steps 4 - 6 for each deck board.
8. Position the final deck board onto the last set of Fiberon fasteners. Ensuring a consistent gap between boards (fig. 3:3), predrill the final deck board with a 1/8" drill along the outside edge of the board at every support joist. The holes at the end of the board should be a minimum of 1-1/2" from the end. The holes along the grooved edge of the board should be a minimum of 1" from the edge.
9. Secure the final deck board by fastening a #10 x 2-1/4" long stainless steel deck screw in each pre-drilled hole. **DO NOT OVER-TIGHTEN THE SCREWS**

In Line Fastener
Used for fastening single board to joist.



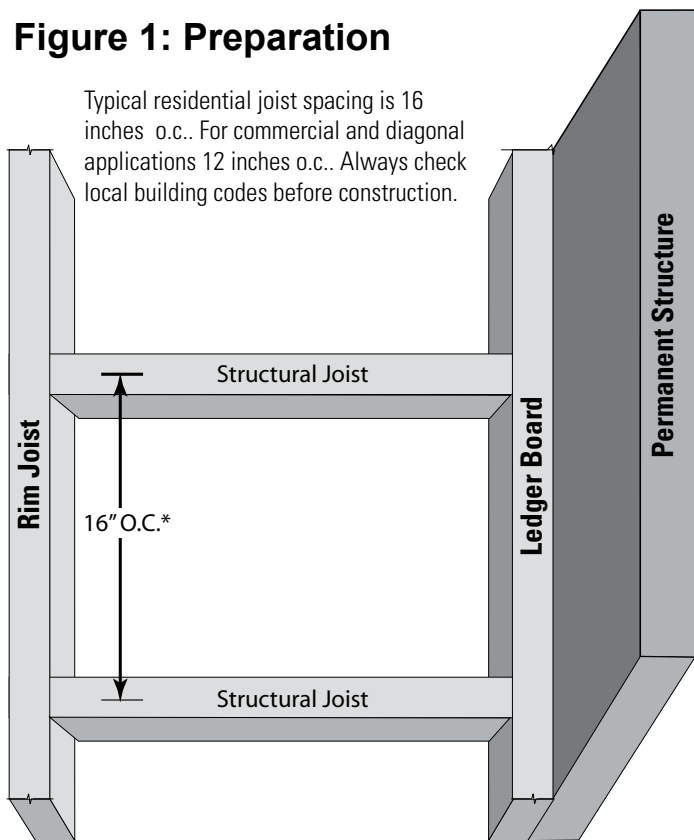
Butt Joint Fastener
Used for fastening two boards to one joist.



Gunnable Installation Option
Installs Standard or End Seam Fastener

Figure 1: Preparation

Typical residential joist spacing is 16 inches o.c.. For commercial and diagonal applications 12 inches o.c.. Always check local building codes before construction.



3 Easy Steps

Figure 3: Installation

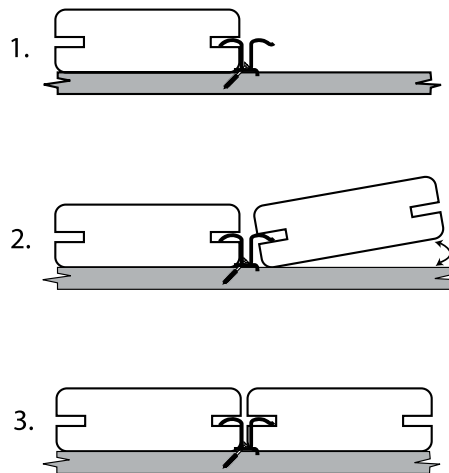
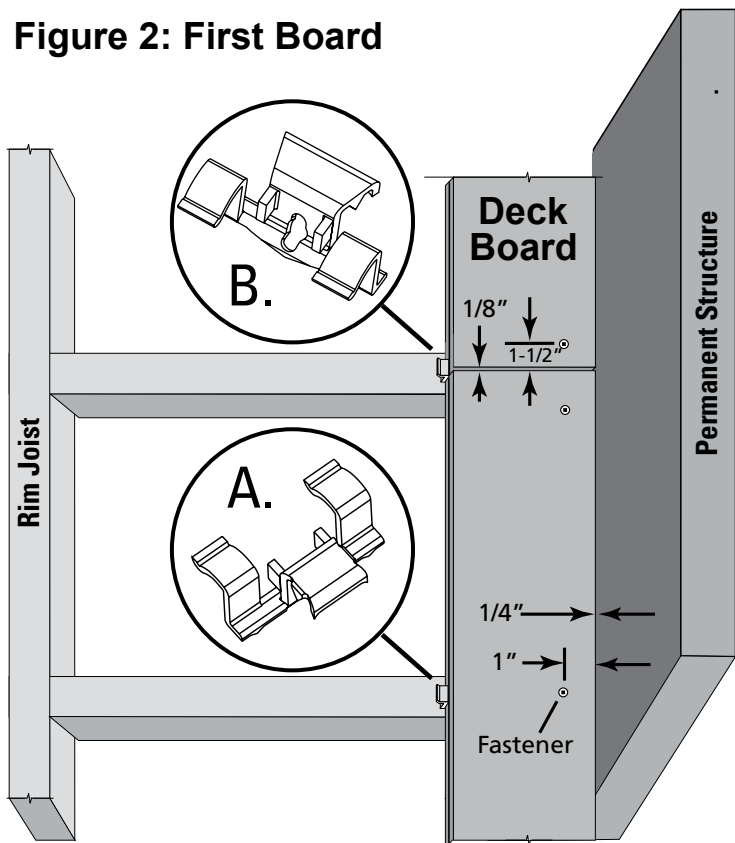


Figure 2: First Board



A. Standard Fastener Application



B. End Seam Fastener Application

